



Telescope: 432 /2939mm - F/6.8
PlaneWave CDK 17"

Refractor: 106/530mm
Takahashi FSQ106

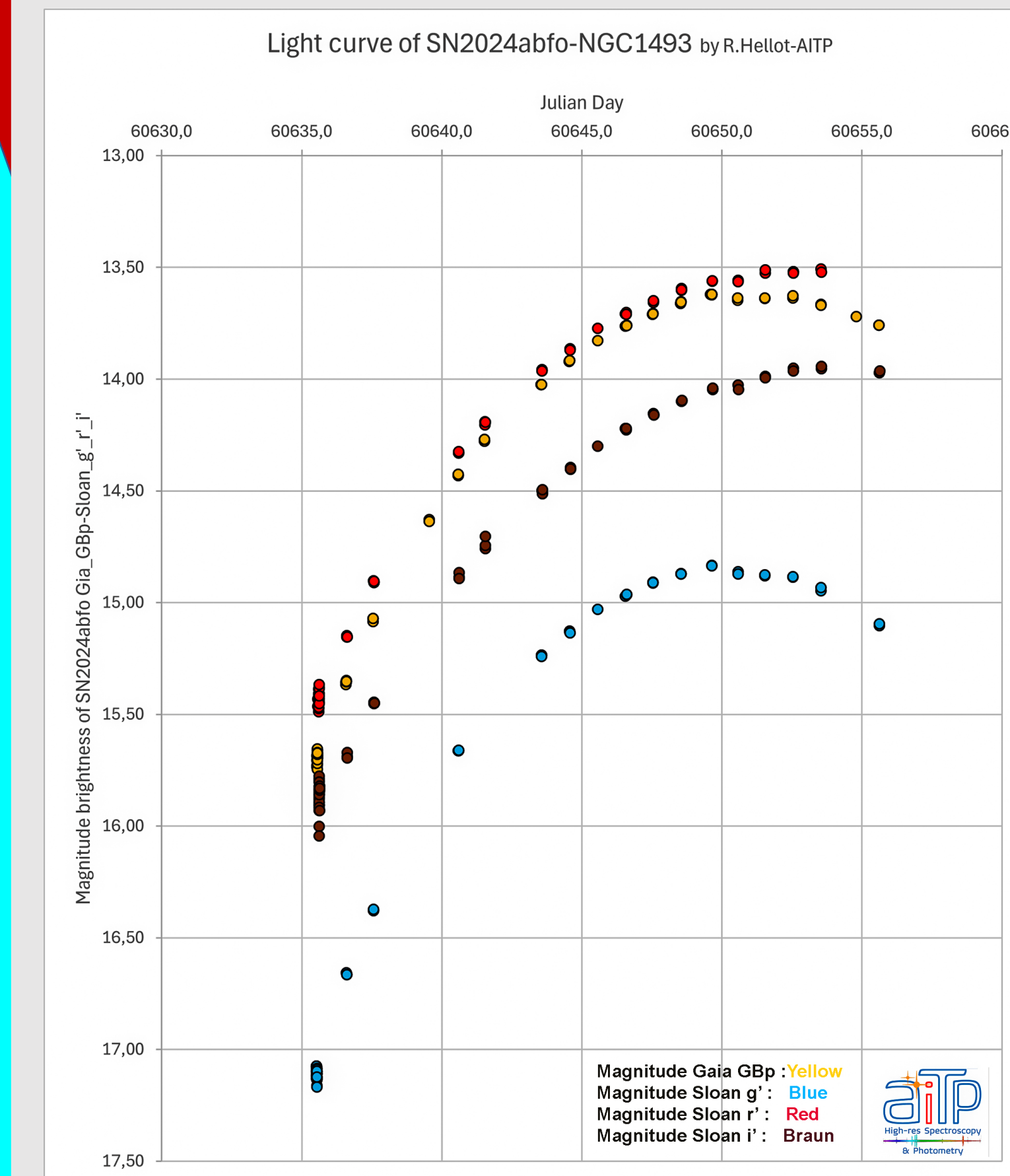
Mont: Direct drive
NTM500 Astelco

Spectrometry: Lhires III
Shelyak-R-18000

Photometry: QHY600M and QHY268M

Filters: Sloan (g'-r'-i') - GAIA (G-GBp-GRp)
(Ha-OIII-SII) - (LRGB)

IC434-@Ph.Lang-Fsq106

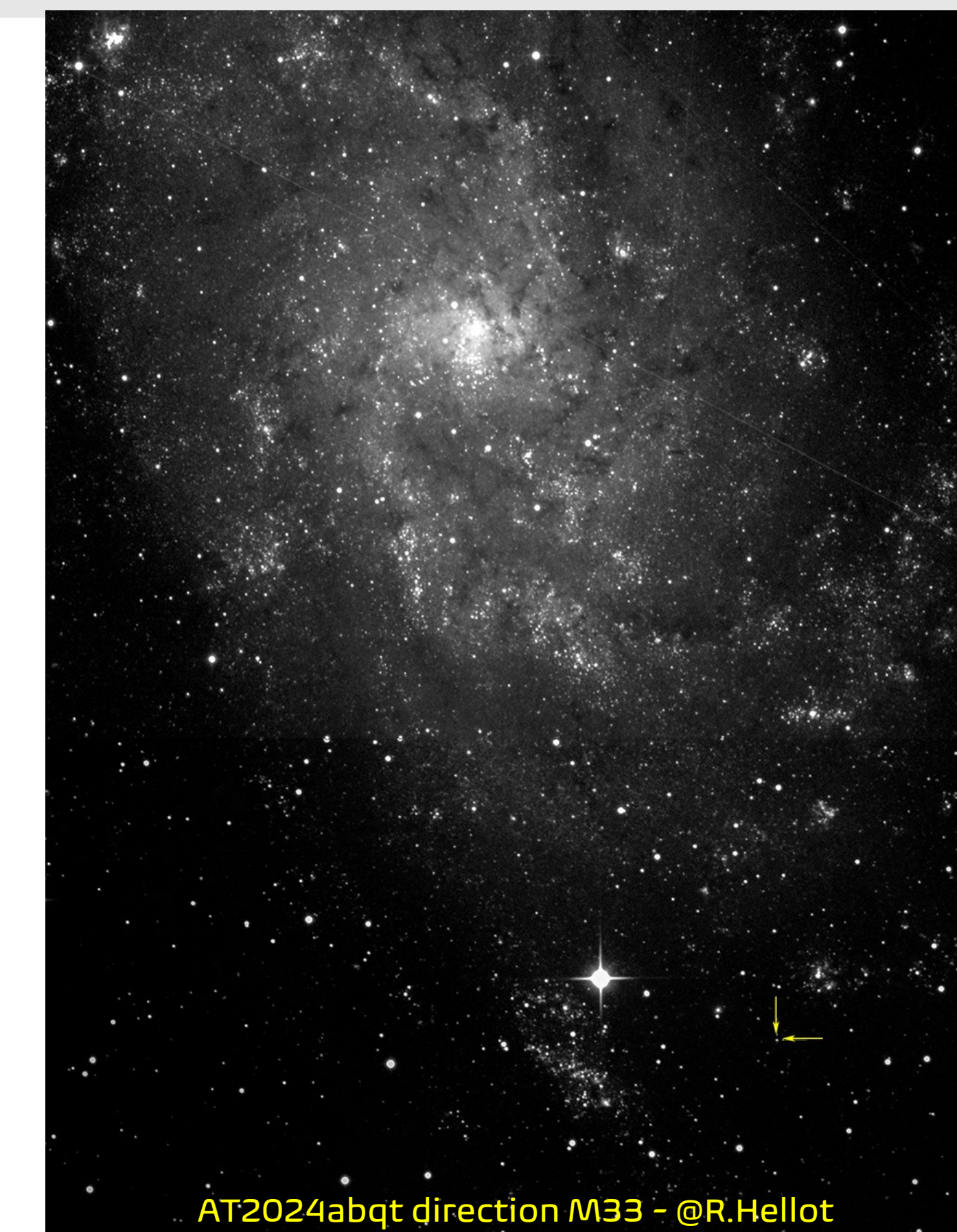


Photométrie

Variables & Astéroïdes



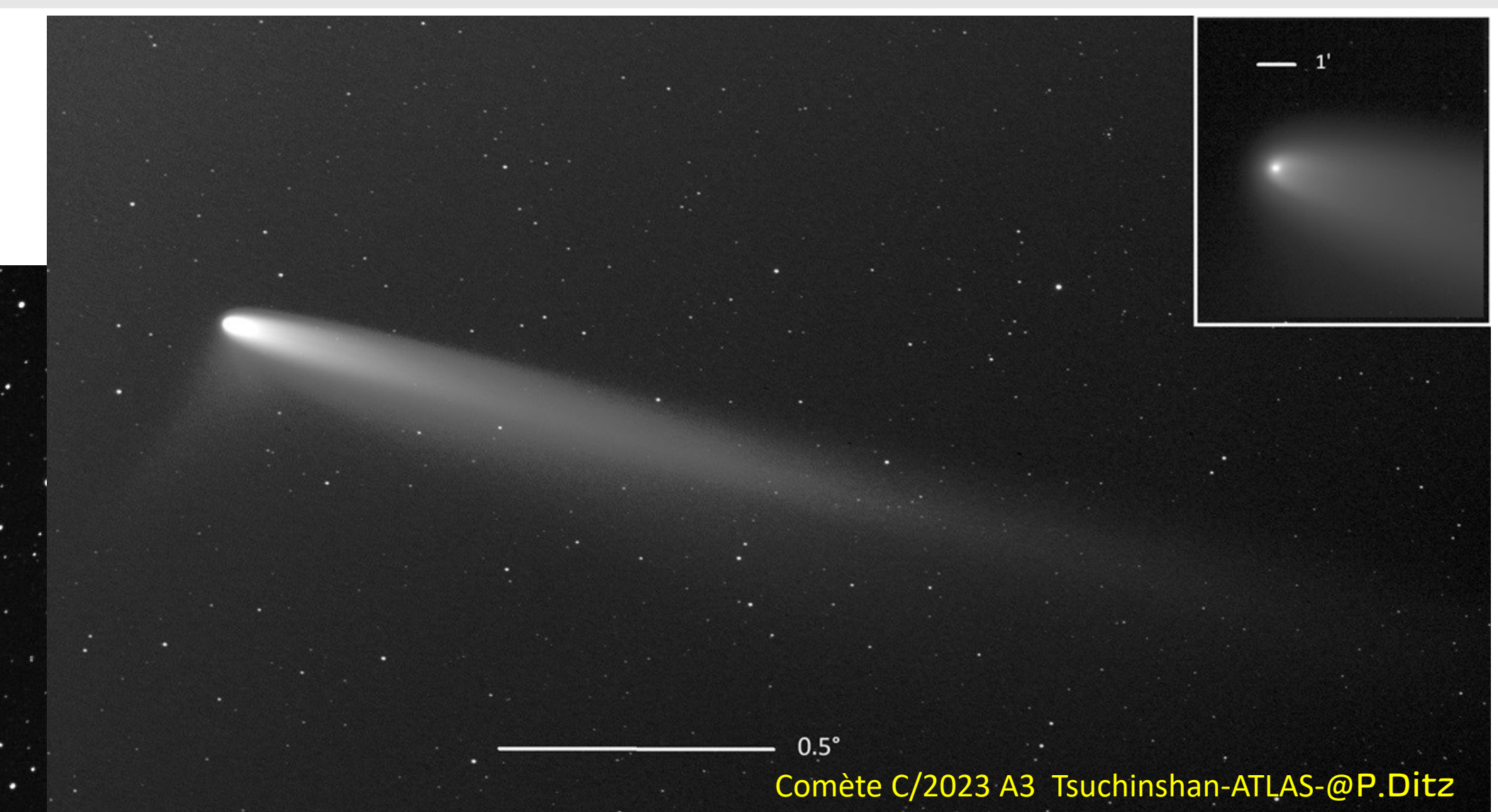
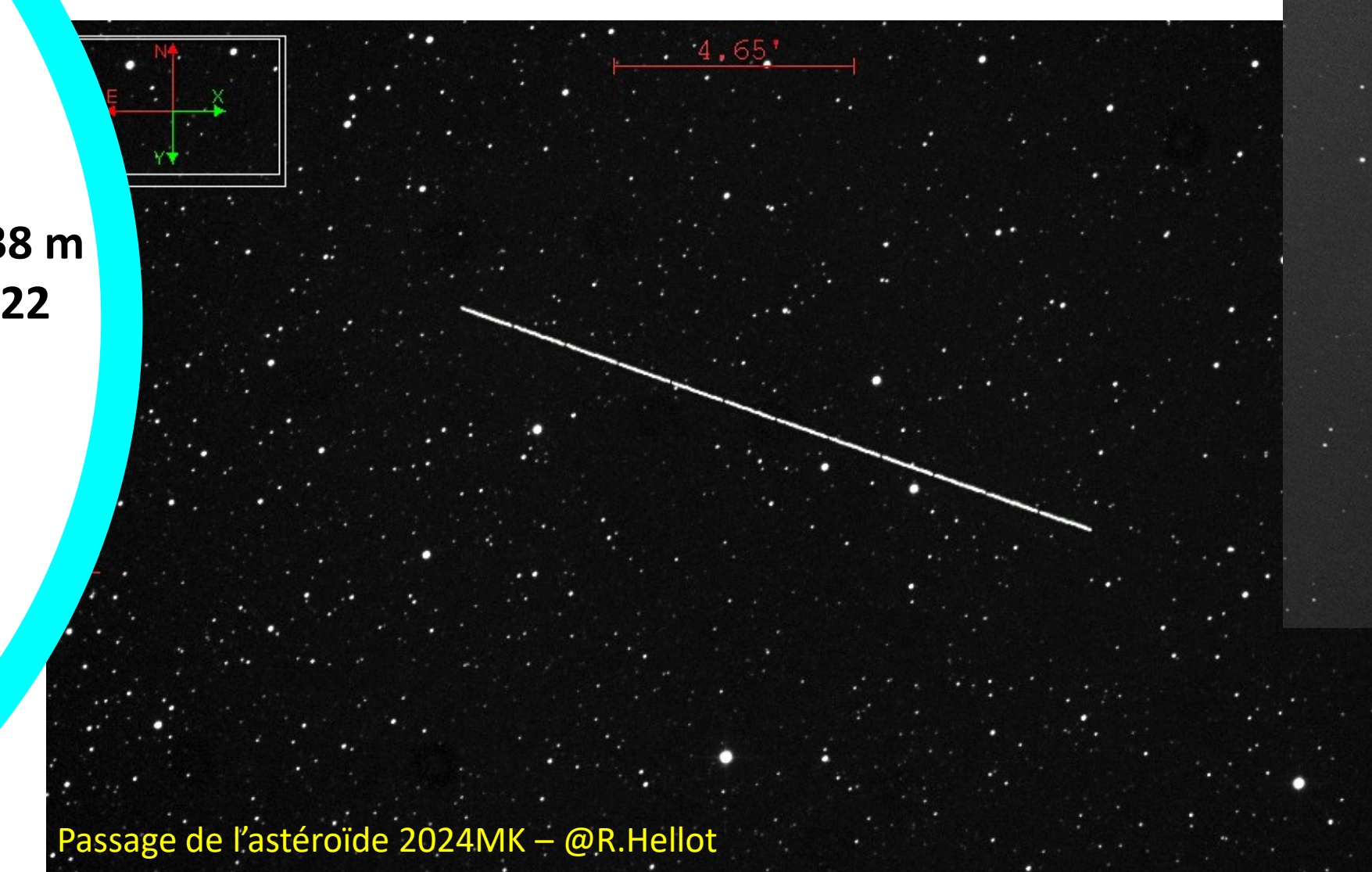
Alertes: SN-AT-GRB
évènements transitoires



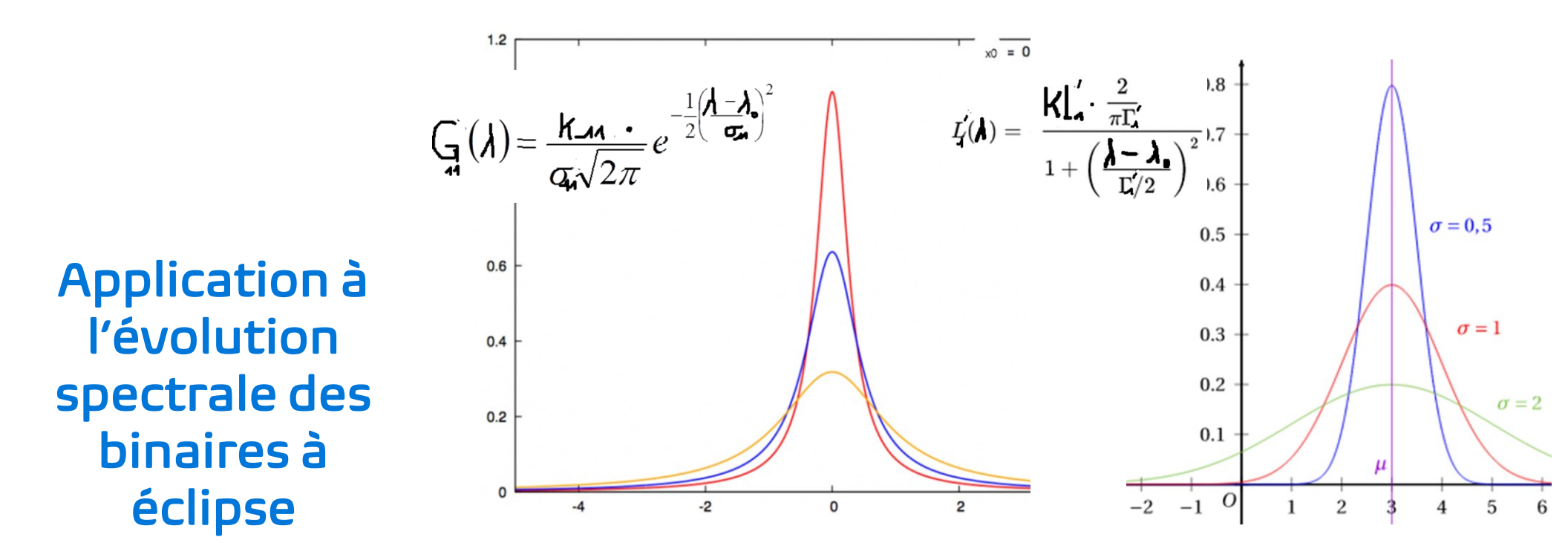
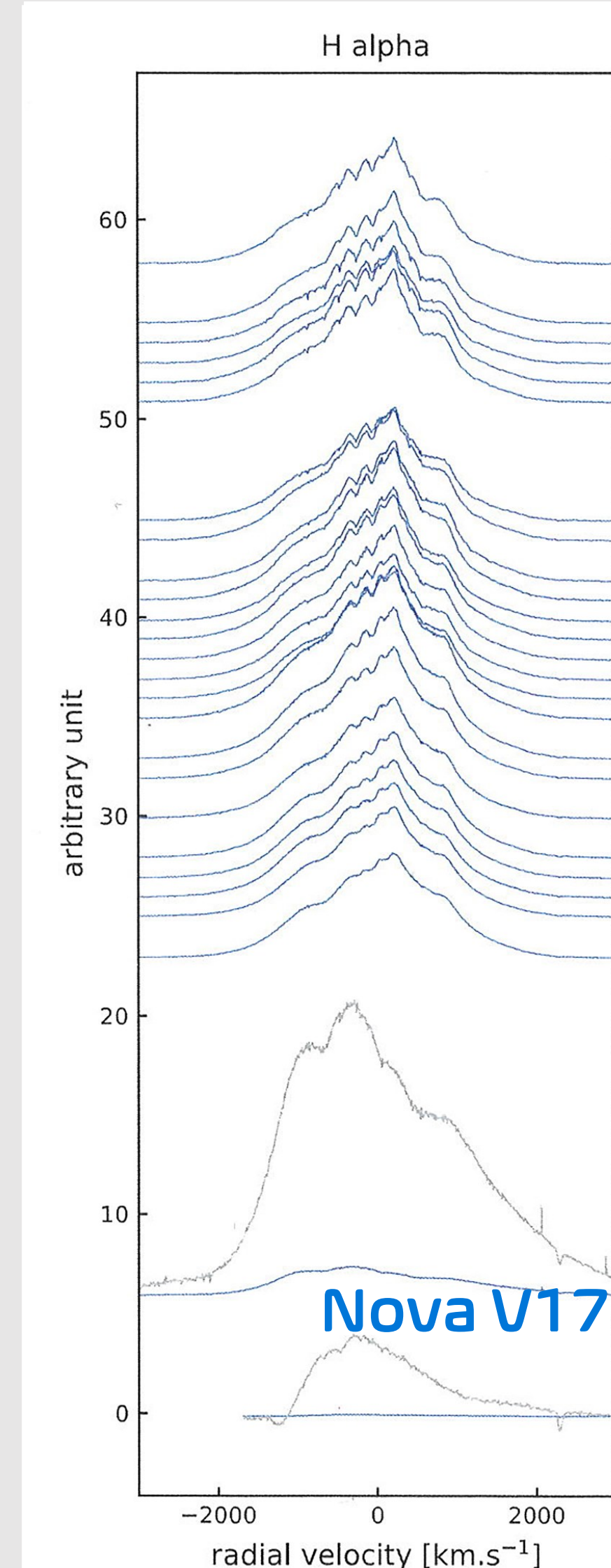
22°57'09.8" Sud
68°10'48.7" Ouest

Altitude: 2 438 m
Mag as-2: >22

Astéroïdes et occultations



Astrométrie et suivi cométaire



Spectroscopie High-Res

études évolutives et modélisation de raies spectrales

